

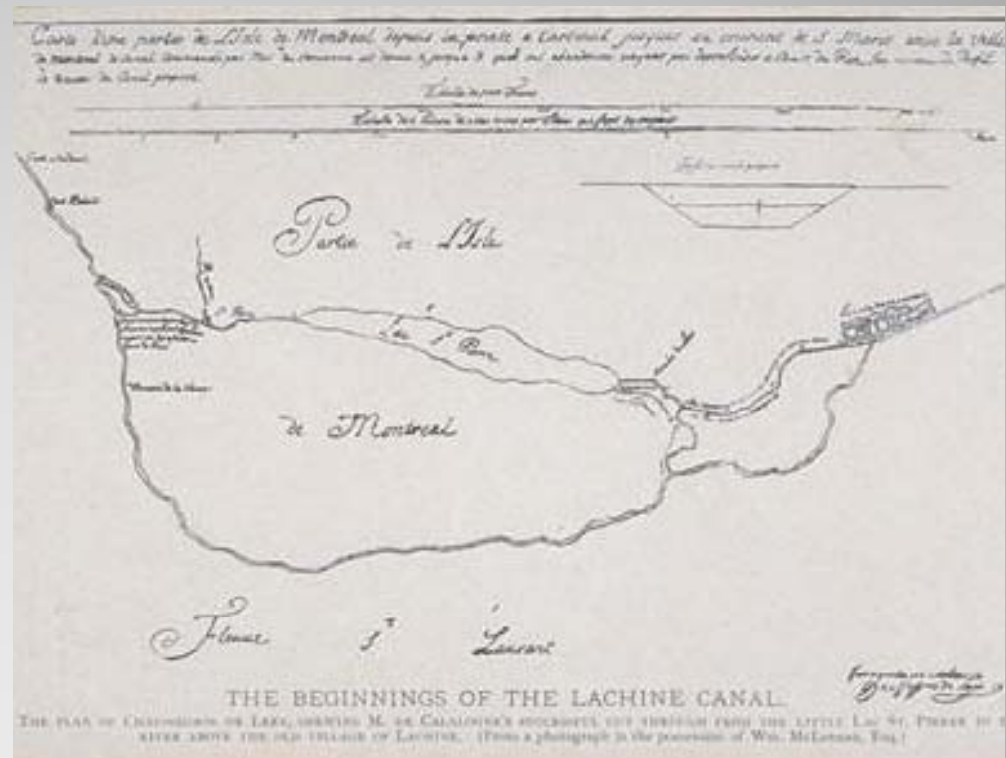
# A Short History of my Neighbourhood

Part 5  
The Canal

# The First Canal: The Saint Gabriel Canal

For a long time, people wanted to build a canal between Montréal and Lachine for two good reasons:

- To supply the mills with waterpower because the streams provided them with little.
- To avoid the Lachine Rapids and thus connect with what would become Upper Canada.



# The Lachine Canal

At last, a canal was dug between Montréal and Lachine. Locks had to be built, seven of them. The canal, 13 km long, is opened in 1825.

Boats would have to wait for the water to reach a certain level to continue their course back then, just like today.

The canal would become very important, enabling the circulation of goods.

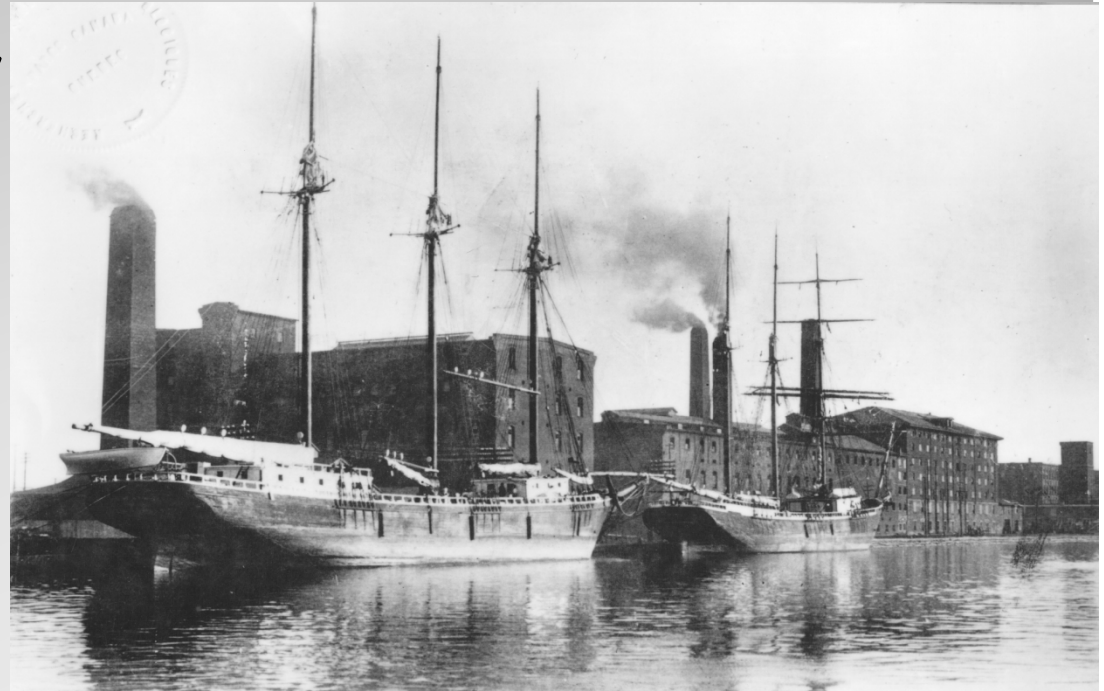


Photo by Frank Redpath, 1897  
Courtesy of Redpath Sugar Museum

# The Canal is Enlarged

- Between 1843 and 1848, the canal was enlarged.
- This time, 1,600 Irish worked on it
- It would be enlarged again in 1873.
- By 1885, its depth would be 4,3m
- The number of locks was reduced to five.



At right, St. Gabriel lock and Glenora Mills, the first industrial mill.

# The Lachine Canal Today

The canal was closed at the Old Port end in 1960.

And then in 1970, the Lachine end would close.

It has been open to pleasure craft again since 2002.

You can take a boat ride on it.

You can rent a boat or a kayak.

But you still have to wait at the locks

Photo by Paul-Émile Cadorette,  
Parcs Canada

